

# CRAWLER BULLDOZER ZD170-3

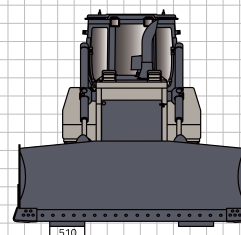
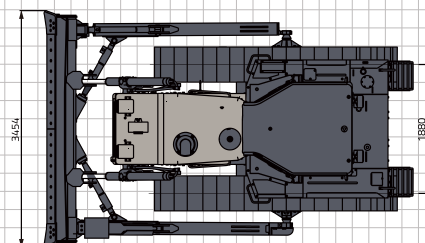
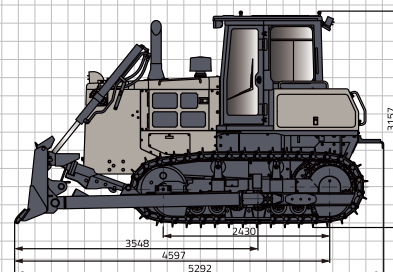


**ZOOMLION**

# CRAWLER BULLDOZER

## ZD170-3

	Items	ZD170-3
Engine	Manufacturer	Weichai Power Co., Ltd.
	Model	WD10G190E214
	Displacement	9.726 L
	Rated Speed	1900 r/min
	Rated Power	140 kW
	Fuel Consumption Rate	≥193.4 g/kW·h
Undercarriage	Width of Track Shoe	510 mm
	Pitch	203.2 mm
	Track Gauge	1880 mm
	Length of Track On Ground	2430 mm
	Ground Clearance	400 mm
	Number of Track Shoes (per side)	37 piece
Working Device	Blade Type	Straight tilt blade
	Width	3454 mm
	Height	1136 mm
	Max. Lift of Blade Above Ground	982 mm
	Max. Drop of Blade Below Ground	511 mm
	Blade Capacity	4.5 m³
Dimensions and Weight	Operating Weight	16600 kg
	Length (without ripper)	5292 mm
	Length (with multi/single-shank ripper)	6516 mm
	Width	3454 mm
	Height (to top of cab)	3157 mm



**ZOOMLION**

**Zoomlion Heavy Industry Science & Technology Co.,Ltd.**

Add: No.361, South Yinpen Road, Changsha, Hunan Province, P.R.China 410013

Email: earthmoving@zoomlion.com

Copyright©2023 Zoomlion. All rights reserved. Reproduction and copying of any part of contents is not allowed for any purposes without Zoomlion's approval.  
Note: Materials and specifications are subject to change without notice. Featured machines in photos may include additional equipment.

