

XLZ2303K



XLZ2303K

Road Cold Recycle Machine

XLZ2303K cold recycler is a kind of multi-functional pavement maintenance equipment, which is mainly used for the upgrading and modification of the existing asphalt pavement. XLZ2303K cold recycler is suitable for mixing the filler, cement and lime etc. with the natural soil to improve the mechanical and physical properties of the soil, and for milling the damaged asphalt or asphalt concrete pavement which is less than 250mm thick.

Performance and characteristics

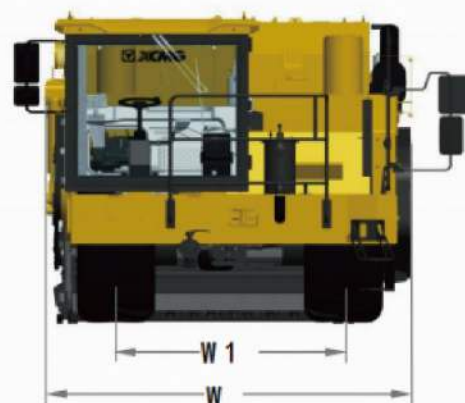
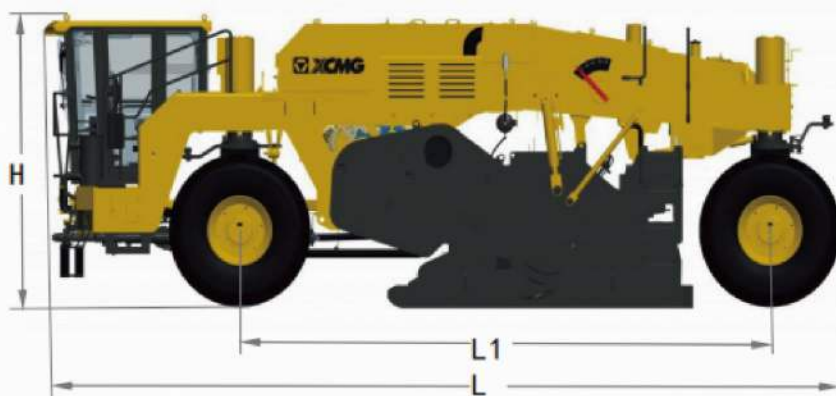
- The milling width is 2,300mm and the maximum milling depth is 430mm per pass.
- It is equipped with a traveling system with four speeds to implement four-wheel traveling and four-wheel steering; the low-pressure wide-base large-pattern tires run stably and ensure big adhesion.
- The milling rotor rotates opposite to machines working direction. Spirally arranged picks of milling rotor ensures the best milling and mixing performance. XCMG patented quick change tool holders ensures easy and quick replacement of picks.
- The sprinkling system has water sprinkling function, and

- the water flow can be controlled manually or intelligently;
- Horizontal sliding cabin offers all-around visibility for perfect job.
- The high-pressure cleaning device is equipped to clean the dirt on the machine from time to time.
- The air spring turnover hood is fitted to replace the machine conveniently.
- The emulsified asphalt sprinkling device is optionally fitted, and the emulsified asphalt flow can be controlled manually and intelligently.

Main dimensions

Unit: mm

Model	L	L1	H	W	W1
XLZ2303K	9340	6250	3197	3218	1980



Main specifications

Item	Content	Unit	XLZ2303K
Working device	Milling width	mm	2300
	Milling depth	mm	0-430
Milling rotor	Space between tools	mm	30×2
	Quantity of tools	piece	200
	Diameter of milling rotor	mm	1480
Diesel engine	Manufacturer		WEICHAI POWER CO., LTD.
	Cooling mode		Water-cooling + air-air inter-cooling
	Model		WP17G770E302
	Number of cylinders		8
	Rated power	kW	515
	Engine speed	rpm	2100
Speed/gradeability	Fuel consumption: Full load	kg/h	111.4
	Working speed	km/h	0-3
	Traveling speed	km/h	0-12
	Theoretical gradeability (working gear)	%	50
	Ground clearance	mm	350
Weight/load	Front axle load	kg	19500
	Rear axle load	kg	14000
	Shipping weight	kg	33500
Tank volume	Diesel tank	L	1500
	Hydraulic oil tank	L	320
	Water tank	L	550
	Electric system	V	24
Overall dimensions in shipping state	Machine (L×W×H)	mm	9340×3218×3197