

# SHANTUI

## SD16E

Crawler Dozer



Engine Model: WEICHAI WD10G178E25  
Gross Power: 131kW(175hp)@1850rpm  
Operating Weight: 16,890kg

Shantui Torqflow Travel Drive  
powershift transmission

# SD16E SPECIFICATIONS

## ENGINE

Engine	WEICHA1 WD10G178E25
Emission	Tier2/Stage II
Rated revolution	1850rpm
Gross power	131kW(175hp)@1850rpm
Net power	120kW(160hp)@1850rpm
Number of cylinder-bore×stroke	6-126X130mm
Displacement	9.726L
Max. torque	830N.m@1100-1200rpm
Cooling system	Mechanic fan

## DRIVE SYSTEM

Drive system	Manufactured by SHANTUI, with high working efficiency, low breakdown rate; torqflow transmission, 3 gears forward and 3 gears backward.	
Traveling speed	Forward	0~3.29km/h, 0~5.82km/h, 0~10.7km/h
	Backward	0~4.28km/h, 0~7.59km/h, 0~13.8km/h
Torque converter	3-element, single stage, 1-phase	
Transmission	Planetary gear and torqflow transmission hydraulically actuated, forced lubrication	
Bevel gear shaft	Spiral bevel gear, single-stage speed reduction, splash lubrication	
Steering clutch	Wet multiple disc, disc spring loaded, hydraulically actuated, hand operated, interconnected with steering brake.	
Brake	Wet, contracting band, foot operated with hydraulic booster	
Final drive	Spur gear, double reduction ,splash lubrication	

## CHASSIS SYSTEM

Type	Swing type of sprayed beam, suspended structure of equalizer bar	
Track shoe type	Single grouser	
Track gauge	1880mm	
Width of track shoe	560mm	
Track grounding length	2635mm	
Track grounding area	32648cm <sup>2</sup>	
Number of track shoe	39pcs/side	
Grounding pressure (standard configuration)	68kPa	
Number of carrier roller, pcs/side	2	
Number of track roller, pcs/side	6	
Pitch	203mm	

## REFILL CAPACITY

Fuel capacity	315L
Coolant liquid capacity	62.8L
Engine oil capacity	24L
Hydraulic oil tank	112L
Transmission	52L
Drive axle	70L
Final drive	21L/side

## OPERATING WEIGHT

Standard	16890kg
----------	---------

## BLADE

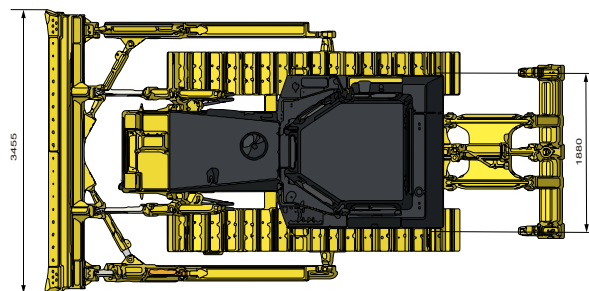
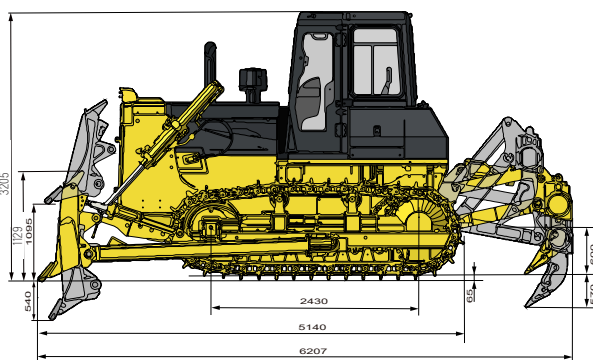
Blade type	Straight-tilt
Blade capacity	4.5m <sup>3</sup>

## DIMENSION

Machine height (without ROPS)	3205mm
Track grouser height	65mm
Ground clearance	400mm
Machine length (with draw bar)	5345mm
Max. lifting height of blade	1095mm
Max. digging depth of blade	540mm
Digging angle of blade	55°±3°(deg.)
Blade width	3455mm
Blade height	1129mm
Width from end of left track shoe to end of right track shoe (standard)	2440mm

## RIPPER

Type	Three-shank ripper
Weight	1631kg
Max. ripping depth	460mm
Max. lifting height	600mm
Ripper length (at deepest ripping)	1580mm
Ripper width	2080mm
Departure angle (at highest lifting)	32.1°
Ripping width	1900mm
Distance between ripper teeth	950mm



\* THE SPECIFICATIONS ARE SUBJECT TO CHANGE WITHOUT NOTICE. THE PICTURES MAY INCLUDE OPTIONS. THE ACTUAL COLOR & APPEARANCE OF THE PRODUCT MAY DIFFER FROM WHAT IS SHOWN.



Shantui Social

## SHANTUI CONSTRUCTION MACHINERY CO., LTD.

ADD: No. 58, G327 Highway, Jining City, Shandong, CHINA  
TEL: +86-537-2909369  
FAX: +86-537-2311219  
EMAIL: trade@shantui.com  
WEB: www.shantui.com

